

1

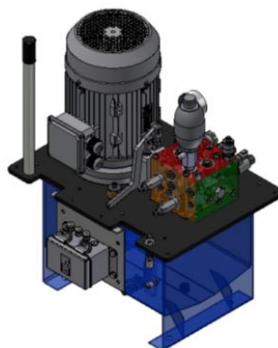
HYDRAULIC POWER UNITS

STEEL MILL CRANES

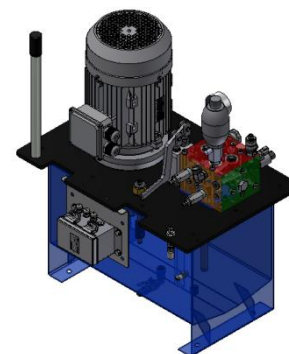
1.0 Hydraulic power unit steel mill series



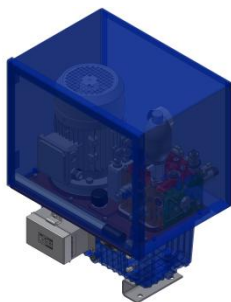
HPT08-SM



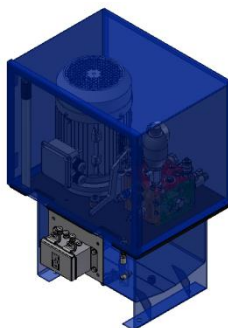
HPT20-SM



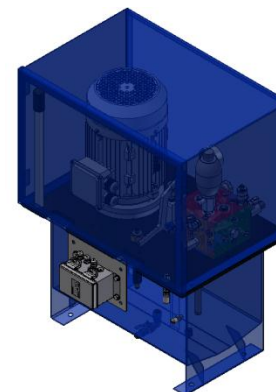
HPT40-SM



HPT08-SMS4EN

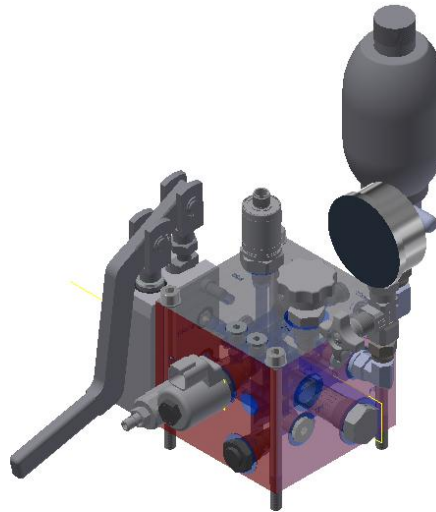


HPT20-SMS4EN



HPT40-SMS4EN

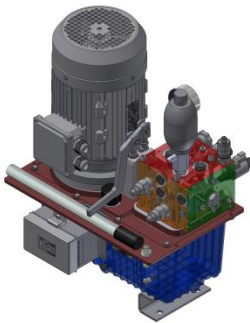
2.0 Hydraulic power unit manifold models



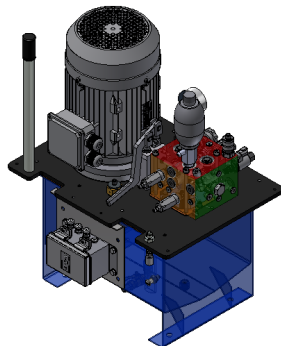
MB1V3

Hillmar manifolds are manufactured standard in aluminum

3.0 Principle of Operations



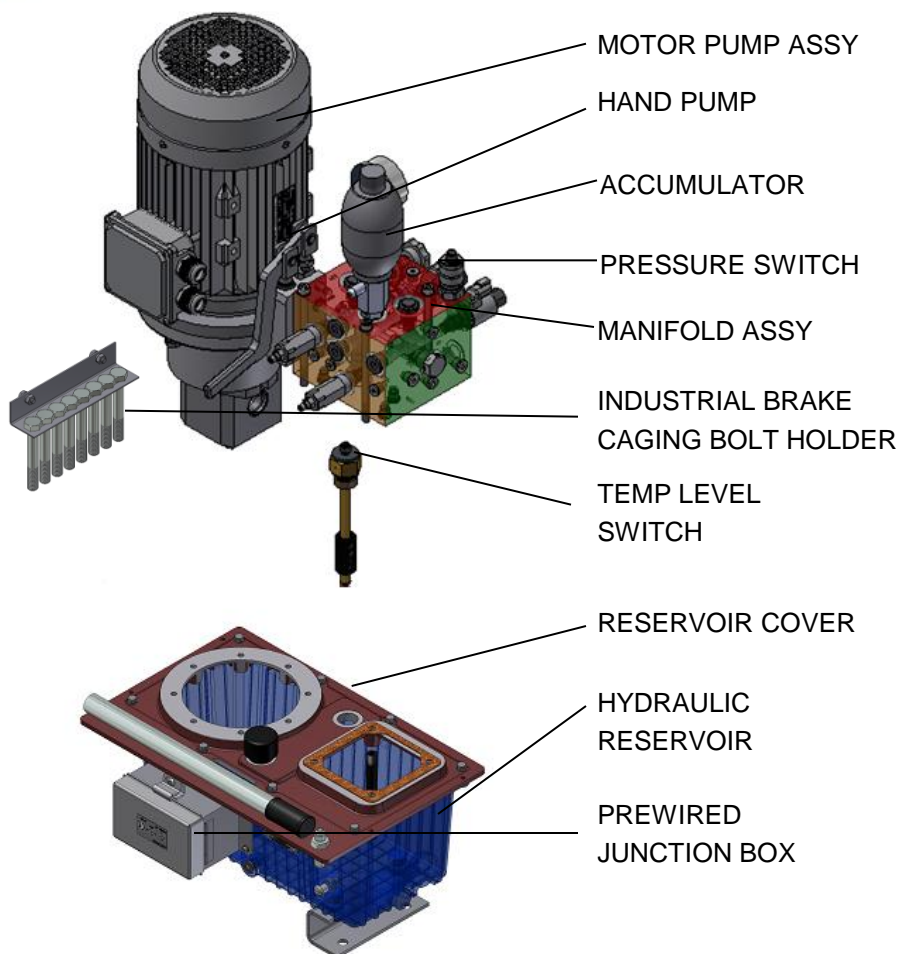
DCSM model



SSSM model

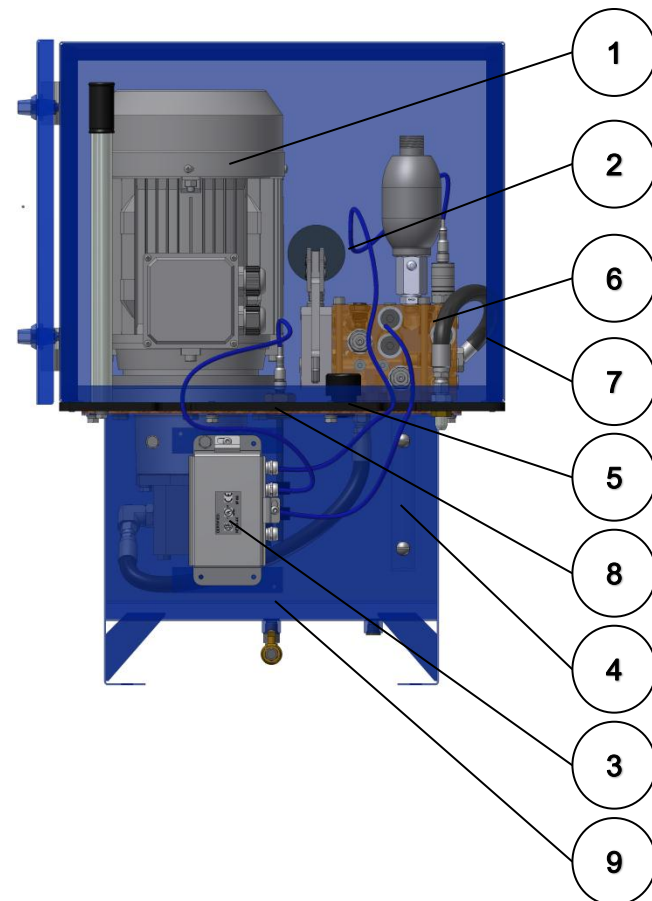
- All HPT system components are modular and easy field replaceable.
- Each HPT hydraulic system is supplied standard as a non-constant running system.
- Available in 3 size hydraulic systems 1 DC & 2 SS models.
- The hydraulic power unit runs until signal from either a pressure switch or proximity switch tells it to stop.
- The unit will remain shut down until internal system leakage reduces the system pressure thus activating an electrical signal to recharge the system.
- It should be noted that during operation system pressure is never allowed to drop below the minimum system release pressure.
- The SM series of hydraulic power units has been designed specifically for use with steel mill cranes.

4.0 Design Highlights



- All hydraulic components are field replaceable without having to remove reservoir.
- Stainless steel (304) reservoir on 20 and 40 liter models.
- All fasteners stainless steel (304) standard.
- Hand pump design for product manual release.
- All reservoirs standard with V-bottom.
- All hydraulic hose comes complete with type & date marks.
- High pressure filter with replaceable field element.
- System components standard from brand name manufacturers.

4.0 Design Highlights



1. Electric motor

- All motors designed for continuous operation @ +90°C.

2. Electric wiring and fittings

- All electric wiring and fittings designed to steel mill standard of +90°C.

3. Junction box

- Stainless steel junction box and junction box terminal strips designed to steel mill standard of +90°C.

4. Site level gauge

- Suitable for +90°C.

5. Filler breather

- Suitable for +90°C.

6. Hydraulic hose and fittings

- All hydraulic hose and fittings designed for +90°C operation.
- Each exposed hose would come with a heat resistant protective cover.

7. Enclosure cover

- All steel mill hydraulic power units supplied with dust proof stainless steel enclosure cover.
- Each cover completes with a hinged door

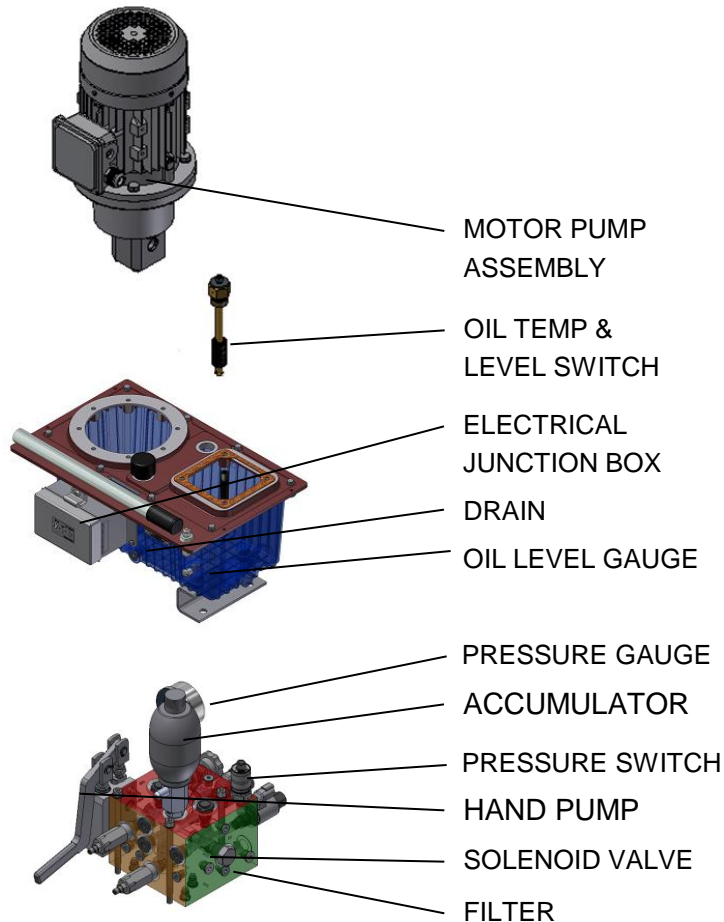
8. Temperature and level switch

- Suitable for +90°C.

9. Recommended

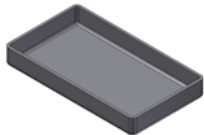
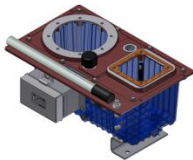
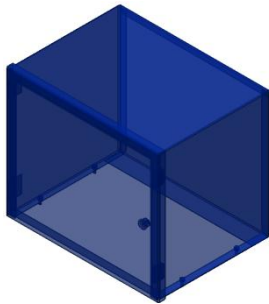
- Hydraulic fluid is ISO grade 15 aviation hydraulic fluid.

5.0 Standard Features



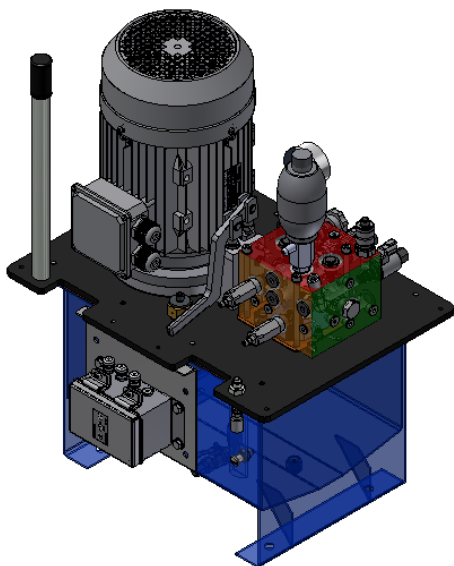
- Hand pump for manual release.
- Solenoid valve with LED indicator.
- Stainless steel (304) reservoir on 20L & 40L models.
- Stainless steel (304) fasteners.
- IP56 rated electrical motor & junction box.
- All system components designed for maximum 20MPa operating pressure.
- Reservoir accessories standard including:
 - ❖ Oil temperature level switch.
 - ❖ Oil level Gauge.
 - ❖ High pressure filter.
 - ❖ Drain reservoir shut off valve.
 - ❖ Pressure switch.
 - ❖ Accumulator.
 - ❖ Pressure Gauge.
 - ❖ All components field replaceable.

6.0 Design Options



- Stainless steel (304) enclosure
- Oil drip pans
- Hose and fitting kits
- CSA certification or CSA ready
- Explosion proof
- Reservoir heater
- Motor strip heater
- Stainless steel junction box upgrade
- Weather stripping
- Non standard voltages
- Custom paint colors
- Custom electrical configuration

7.0 Standards



All Hillmar products are designed & manufactured in accordance with the following standards.

- 7.1 Design standards.
- 7.2 Performance standards.
- 7.3 Document standards.
- 7.4 Production & Quality standards.
- 7.5 Packaging standards.

All Hillmar products are delivered with Hillmar commitment to customer satisfaction.

All Hillmar products manufactured in accordance with DIN 10204-2.1

Hillmar is an ISO 9001:2008 certified company.